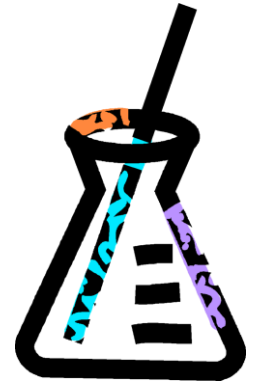


Components of the ACT Test



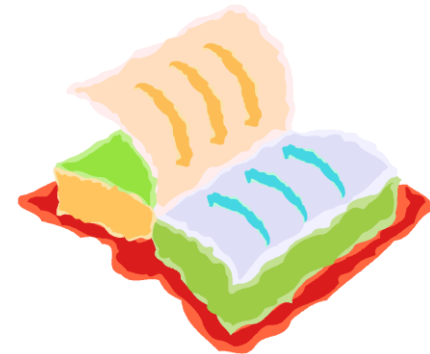
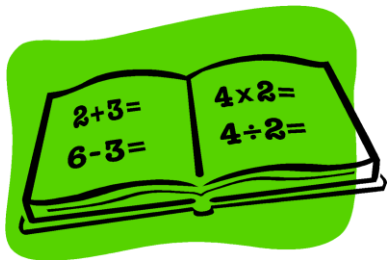
English

Math

Reading

Science

Optional Writing



ACT Overview

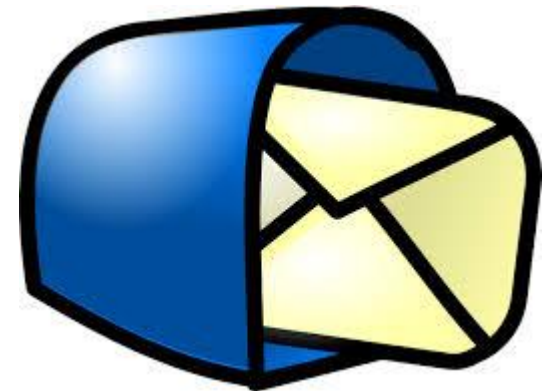
You can send your scores to up to 4 colleges
for FREE

Additional Schools Cost \$12 each



ACT OVERVIEW

If you change your mind about what schools you are interested in, you can always pay to have your scores sent out to additional schools at a later date.



Registration and Cost

2016-17 ACT Test Fee

If you add the Writing Test the fee is

There are additional charges for late registration.

You might be eligible for a fee waiver.

Additional info and register @ www.actstudent.org



Everyone gets to take the test for FREE at school in the **Spring**

Technical Colleges now ACCEPT the ACT too

There are **TEST PREP books** in the **LMC** to check out that have tips, strategies, sample ?'s, etc. - **CHECK OUT A COPY!!**

ENGLISH



- 75 questions, 45 minutes
- Usage/Mechanics 40 questions
- 53% of the English subtest
- Rhetorical Skills 35 questions
- 47% of the English subtest

MATH



- 60 QUESTIONS-60 MINUTES
- PRE-ALGEBRA TEST 23% OF THE
- ELEMENTARY ALGEBRA 17%
- INTERMEDIATE ALGEBRA 15%
- COORDINATE GEOMETRY 15%
- PLANE GEOMETRY 23%
- TRIGONOMETRY 7%

READING

40 QUESTIONS, 35 MINUTES

PROSE FICTION	25%
HUMANITIES	25%
SOCIAL STUDIES	25%
NATURAL SCIENCES	25%



SCIENCE

40 QUESTIONS, 35 MINUTES

DATA REPRESENTATION 38%

RESEARCH SUMMARIES 45%

CONFLICTING VIEWPOINTS 17%



SCIENCE CONTENT

BIOLOGY

CHEMISTRY

EARTH/SPACE SCIENCES

PHYSICS



WRITING



Optional portion of the ACT

Additional \$16.50 fee

30 minute testing window-after main test

Argumentative essay

**Taking the Writing Test does not affect
your subject area scores or your
Composite score.**

FORMAT OF THE ACT TEST

ALWAYS IN THE SAME ORDER:

English	45 min.
Math	60 min.
Break	~15 min.
Reading	35 min.
Science	35 min.
Optional Writing	30 min.

WHY IS YOUR ACT SCORE SO IMPORTANT?

IT IS JUST A PART OF THE **ADMISSION REQUIREMENTS**:

ADMISSION TO THE UW SYSTEM OF SCHOOLS INCLUDES THE FOLLOWING ADMISSION CRITERIA:

Admission is competitive and selective. We consider high school performance (class rank, rigor of coursework, cumulative GPA, and trend in grades), ACT/SAT scores, nonacademic factors (leadership, involvement, talent, accomplishments, and diversity in background and experience), recommendations, and personal statements. Academic preparation is the primary consideration for admission.

MANY UNIVERSITIES NOW USE A RANGE OF ACT SCORES AS A
GUIDELINE FOR ADMISSION

50% OF STUDENTS ADMITTED HAVE AN ACT SCORE THAT FALLS IN
THIS RANGE:

UW-EAU CLAIRE	23-27
UW-GREEN BAY	21-25
UW-LACROSSE	23-27
UW-MADISON	27-30
UW-OSHKOSH	21-24
UW-STEVENS POINT	21-26

SOME UNIVERSITIES HAVE A MINIMUM SCORE FOR ADMISSION

UW-MILWAUKEE
MINIMUM SCORE

21

UW-PARKSIDE
MINIMUM SCORE

20

UW-PLATTEVILLE
MINIMUM SCORE

22

UW-RIVER FALLS
MINIMUM SCORE

22

UW-STOUT
MINIMUM SCORE

22

SOME OTHER UNIVERSITIES AND THEIR REQUIREMENTS

ST. NORBERT COLLEGE	22-27
NORTHWESTERN	31-34
IOWA	22-28
MINNESOTA	25-30
HARVARD	32-35
YALE	32-35
BROWN	29-34
MICHIGAN TECH	24-26

ACT SCORES IMPACT ADMISSIONS AND SCHOLARSHIP AWARDS

- MANY UNIVERSITIES AWARD MERIT SCHOLARSHIPS BASED ON GPA AND ACT SCORES.
- SOME SCHOOLS AWARD THESE BASED ON INDIVIDUAL SUBTEST SCORES-NOT YOUR OVERALL COMPOSITE SCORE.
- IT MAY BE TO YOUR ADVANTAGE TO RETAKE THE TEST MULTIPLE TIMES. IT COULD RESULT IN A \$10,000 OR MORE DIFFERENCE IN SCHOLARSHIP AWARD.



- 57% increased their Composite score on the retest
- Schools take your HIGHER score
- The lower your score, the more likely it will go up

When averaging sub scores, ACT rounds up.

Therefore, if your scores average 21.5, you get a 22 on your ACT

The AVERAGE score on the ACT is a 21

Many schools require a 25 or higher to be considered for scholarships.



College **READINESS** Benchmarks As Set by ACT

English 18

Math 22

Reading 22

Science 23

